

# SECESAFE

Model: SSTPCB

## TTLOCK App Based Relay Module Board

- Turn any electric door into a Smart Bluetooth enabled one.
- Easy management through the TTLock App.
- Provide timed, permanent or one time access.
- Send and revoke access remotely.
- Compatible with TTLock Remotes
- Alexa and Google Home Integrations
- Compatible with TTLock Gateways (Sold Separately)

### 12V DC Power

The board can be powered using existing 12V DC power coming from the door controller, or powered separately.  
(Step-down Converter required for 24V+ DC)

### Works With

Auto Doors

Boom Gates

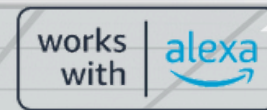
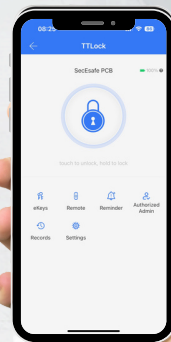
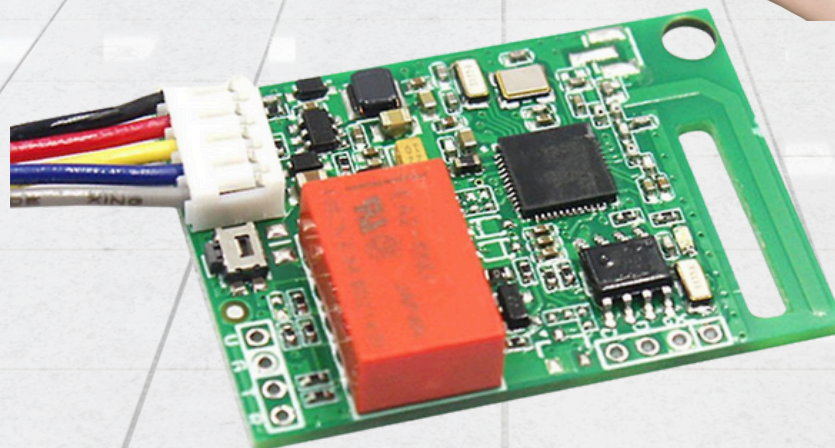
Sliding or Swinging Mortised Gates

Garage Doors

Car Locks

Electric Strikes

Magnetic Locks



**TTLock Available  
on iOS & Android**

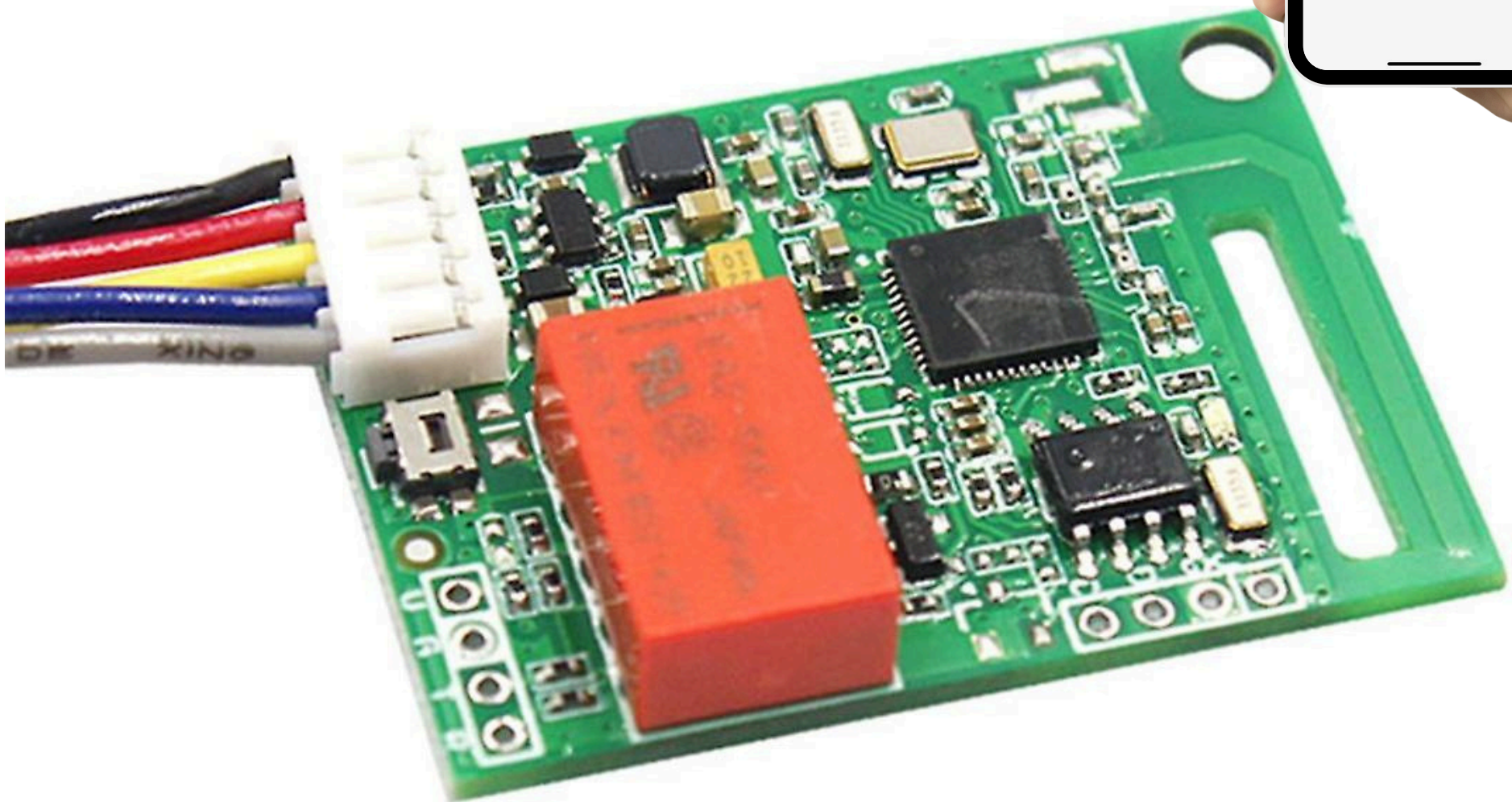
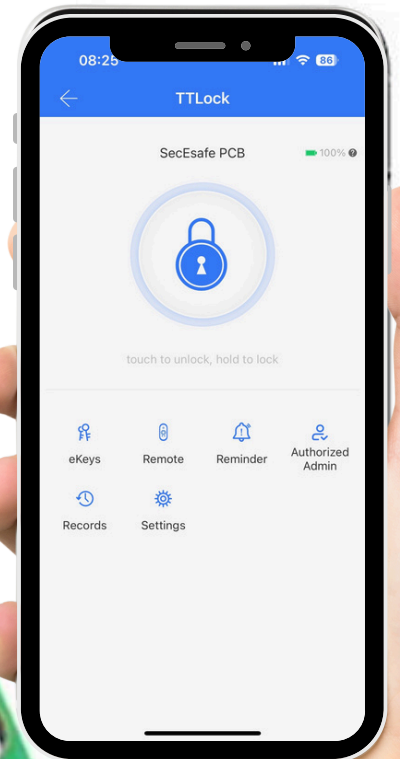






TTLOCK

- Compliant with Bluetooth 4.0 BLE standard
- Easy Management using TTLock App
- Built in Dry Contact Relay (NO/NC)
- Built in RTC clock chip
- Built in Antenna
- Temperature Range: -20°C to +70°C



# SECESAFE

Model: SSTPCB

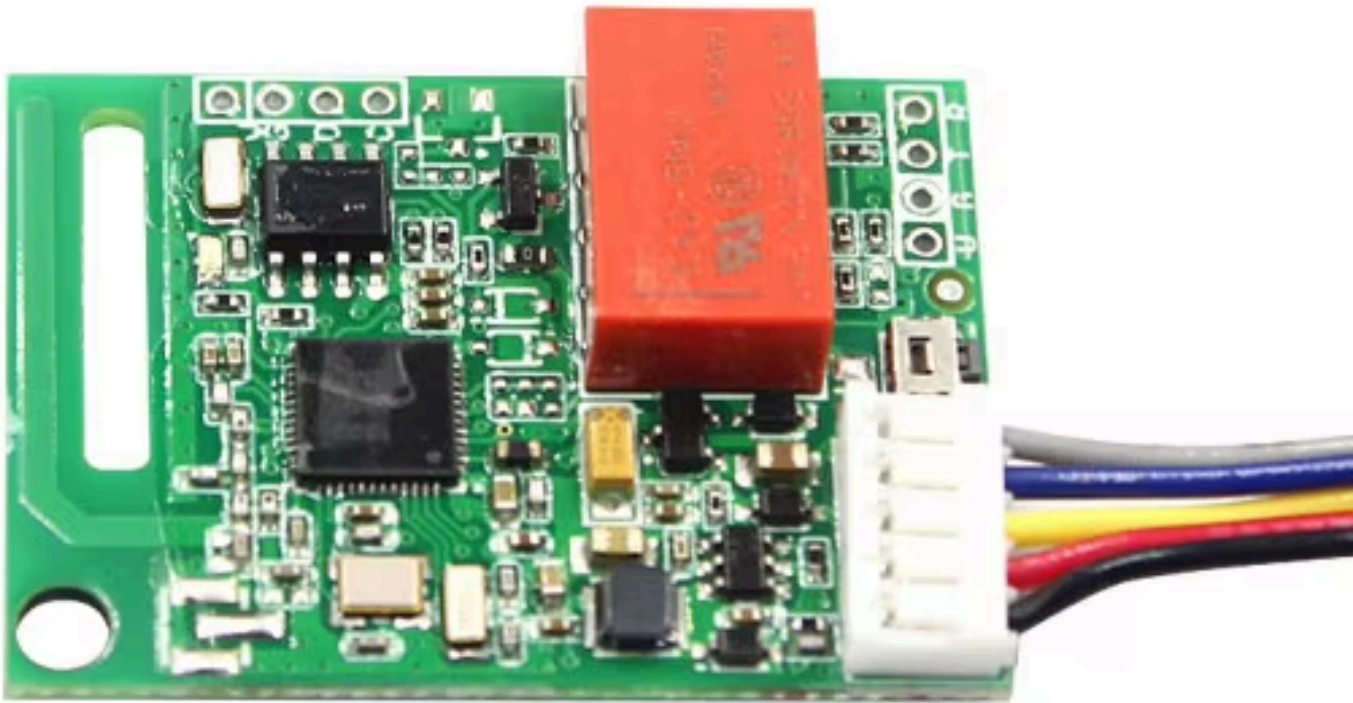
## TTLOCK App Based Relay Module Board

### Board Wiring Diagram

12V DC power is supplied to Red (+ve)/Black (-ve) wires  
Power Supply Sold Separately (12V 1A Plug Pack)

*Board can be used in one of two configurations*  
Normally Open (Fail-Safe - e.g. Fire Door)  
Normally Closed (Fail-Secure - e.g. Server Room)

Black	GND (-ve)
Red	12V (+ve)
Yellow	NC
Purple	COM
Grey	NO



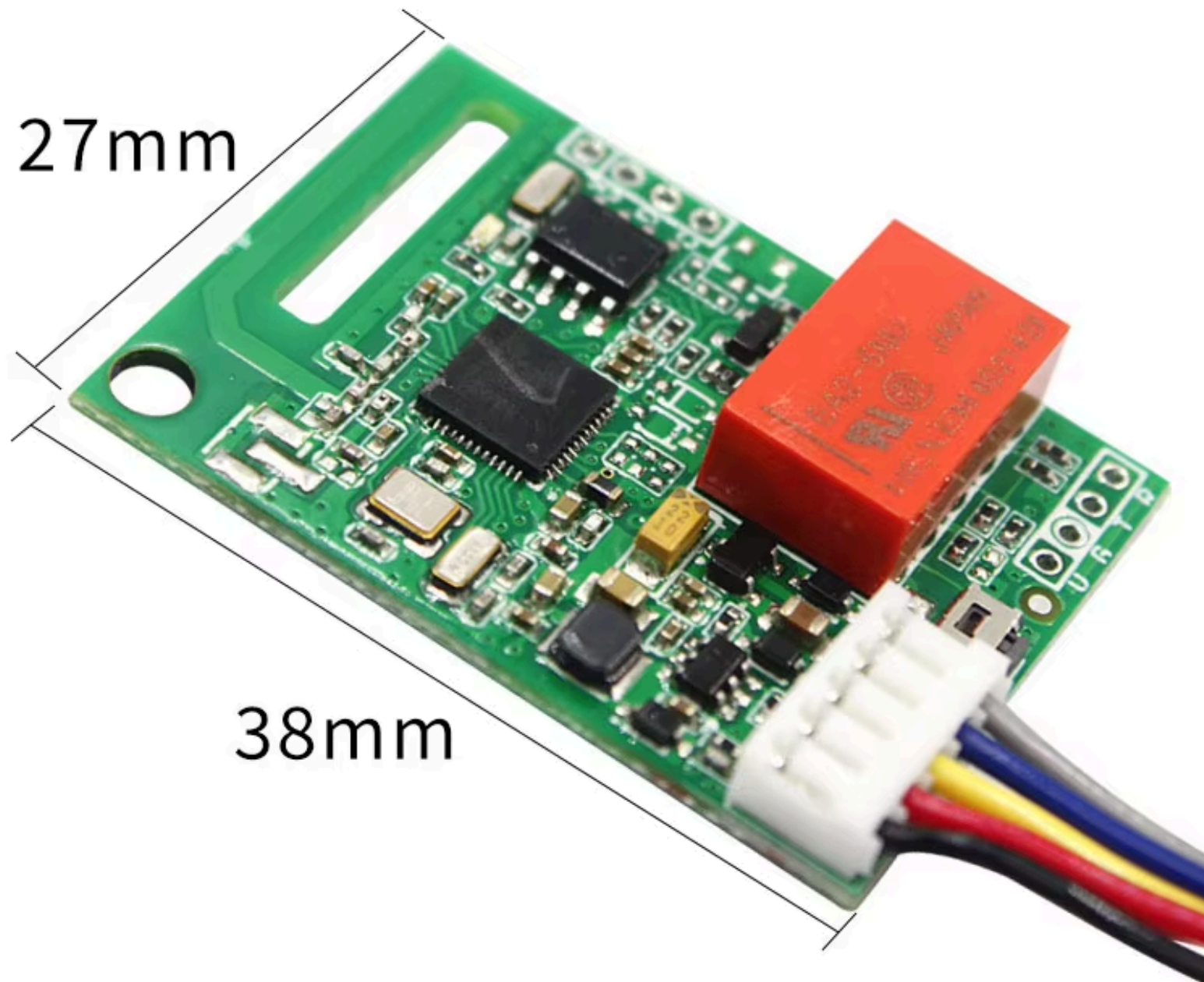


# SECESAFE

Model: SSTPCB

TTLOCK App Based Relay Module Board

## Dimensions

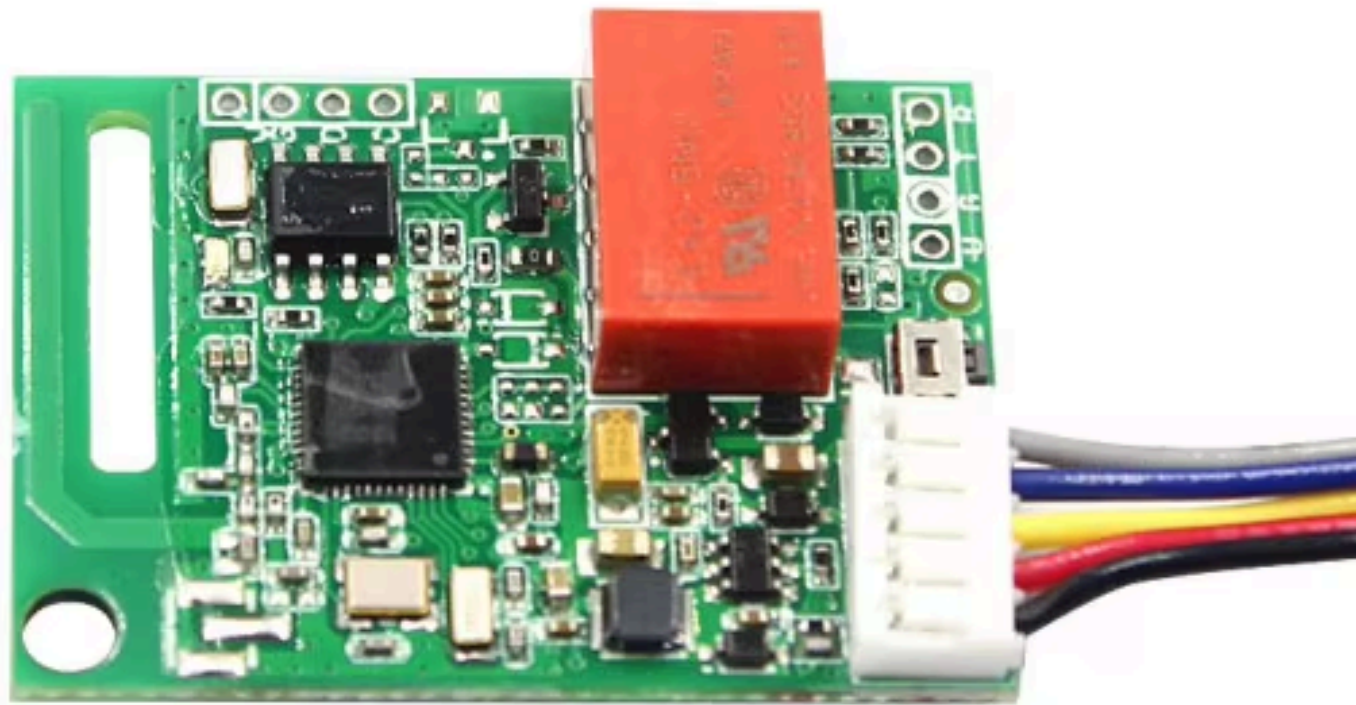


# SECESAFE

Model: SSTPCB

## TTLOCK App Based Relay Module Board

Works with TTLock EKey, SSBTG2W gateway or TTlock SSR16 Remote



Electric lock  
module\*1Pcs

