



# Corporate

Locksmiths & Electronic Security

## CL420BF - Black/Silver Intelligent Bluetooth Slim Mortice Lock

The CL420BF is an IP66 rated Electronic Slim Mortice Lock that can be fitted to a new or existing front/sliding door. It is designed to be installed on slim metal framed glass doors using short backset mortice locks.

It can be operated via Bluetooth using the TTLock iOS/Android app without the need for Internet or Wi-Fi. It is suited for Homes, Offices, Airbnb, Motels etc. Specific codes can be sent via SMS or E-Mail. These codes can be temporary (1 day) or permanent.

Bluetooth access (one time, temporary, or permanent) can also be shared by SMS or E-Mail. MiFare Fobs can also be programmed into the keypad. The user list can be managed through the TTLock app.

Many of these management actions can be performed wirelessly using a TTLock wireless gateway (sold separately).

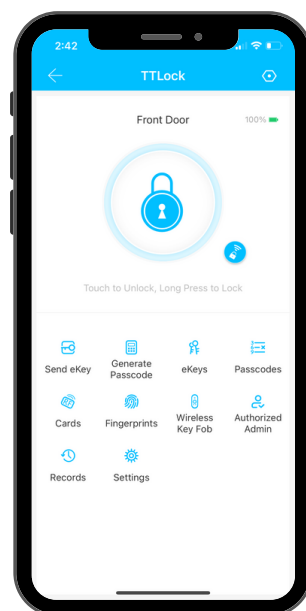
A Micro USB port is included for power if the batteries go flat.

### Unlock Features:

- Fingerprint
- TTLock App (iOS/Android)
- MiFare Card/ Fob
- Pin Code
- Wireless Remote
- Gateway (Sold Separately)



**TTLock Available  
on iOS & Android  
Search for "TTLock"**

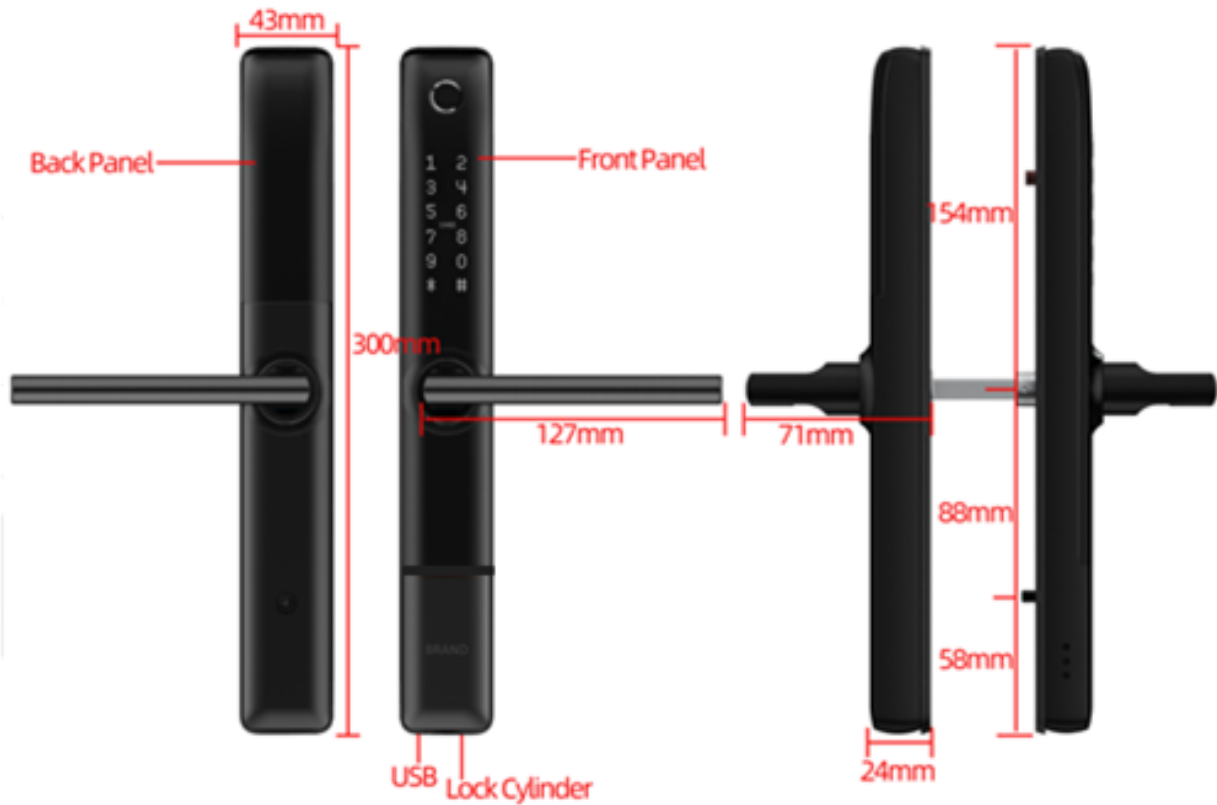




# Corporate

Locksmiths & Electronic Security

## Product Specifications



Product Code	CL420BF
Shipping Dimensions	360x235x115mm
Ingress Protection (IP) Rating	
Bluetooth Comms Distance	8 Metres (walls impede signal)
Communication Mode	BLE 4.0 (Bluetooth Low Energy)
Unlocking Options	Bluetooth, Code, MiFare Fob, Fingerprint, Remote
OS Support	iOS 9+ / Android 5+ / MacOS 11 + M1 Mac
Unlock Time	~1.5 sec
Power Supply	4x AA Batteries/6V



# Corporate

## Locksmiths & Electronic Security

### Features

1. Master Bluetooth Key: The "TTLock" app can be used to open the Lock using Bluetooth.
2. Master Code: The Bluetooth lock unlocks with a permanent Master code.
3. User Code: The mobile app can generate up to 300 codes, with validity durations including One Time, Permanent, or from 5 minutes to 180 days.
4. Wrong Code Entry Limit: After 5 unsuccessful attempts at entering a code, the Bluetooth lock will be unresponsive for 5 minutes. Mechanical key and Bluetooth Unlock can be used to unlock in this state.
5. Fingerprint access can be added through the TTLock app.
6. Time Auto lock: After successfully unlocking, the Bluetooth lock will be automatically locked after a period of time (between 5 to 120 seconds). The owner sets this function.
7. Simple Locking: Press \* key for 2 seconds to lock the Bluetooth lock.
8. Lower Battery Consumption: 4pcs AA batteries can provide 5000 openings
9. Lower Battery Indicator If battery power is low. it will emit low battery warning, battery level will also be updated on the app during Bluetooth unlock. If battery power runs out. Use the keys or a Micro USB cable to provide power and open the lock.
10. Decoy Code: 8 decoy digits can be entered prior to the actual code to prevent the code from being exposed.
11. The TTLock App can be used with multiple locks: Ensure you select the correct device when managing settings or adding users.





# Corporate

## Locksmiths & Electronic Security

### CL420BF

## Installation Instructions



### Note:

1. Before using this lock, please pair it to the mobile phone App .
2. This lock is equipped with mechanical keys for manual unlocking. Remove mechanical keys from the package and keep them in a safe place and always have access to them.
3. To power on the lock, four alkaline AA batteries(not included) are required. Non-alkaline and rechargeable batteries ARE NOT RECOMMENDED.
4. This lock is not designed to be exposed to direct sunlight or rain. It is not waterproof IP rated.
5. The operation of setting lock has a stand-by time limit of 20 seconds; Without any activity, lock will shut after 20 seconds.
6. Keep your fingers clean when using this lock.

Please read this manual before operating your Smart Lock,and keep it for further reference.



# Corporate

Locksmiths & Electronic Security

## Mortice Lock Compatibility

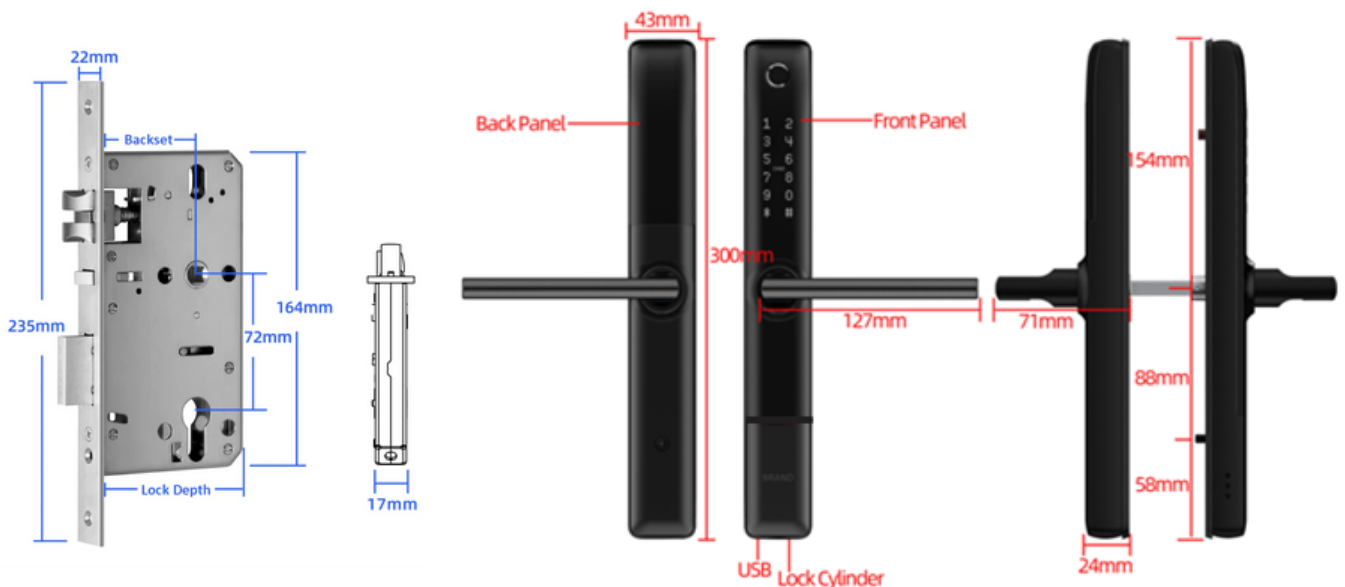
Slim form factor locks are able to be installed in more cramped conditions.  
For instance on a glass door with a thin metal frame.

For slim form factor locks like the CL420BF, short backset locks are commonly used.  
The lock will also function with an existing mortice lock, such as the short backset 23mm  
Lockwood 3782.

While 55-60mm backset mortice locks are compatible,  
the CL835BF is recommended for these locks.

### Supplied Mortice Lock Options

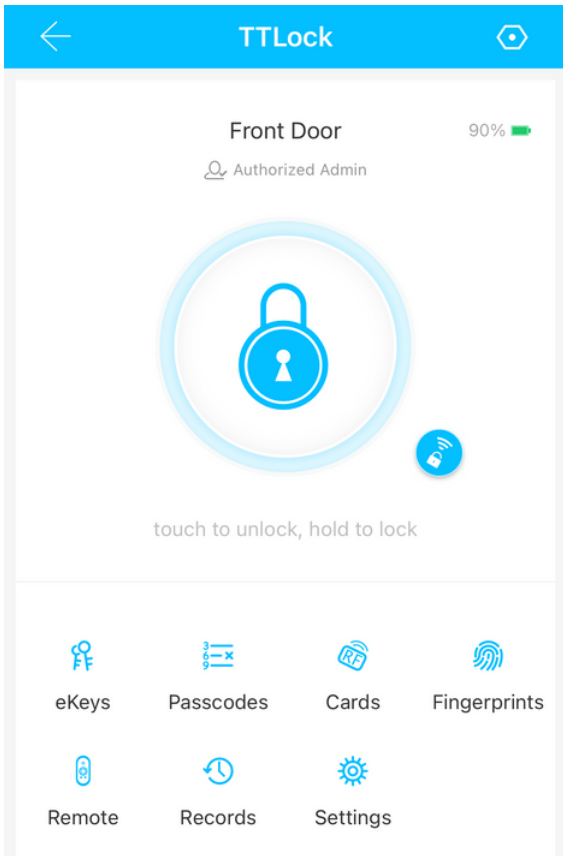
Model	Backset	Lock Depth	Faceplate Length	Locking Features
3585 Swing	35mm	52mm	241mm	Latch, Bolt
3585 Sliding	35mm	52mm	241mm	Sliding Door Hook





# Corporate

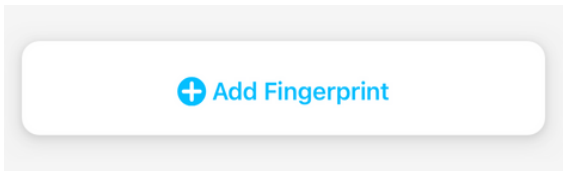
Locksmiths & Electronic Security



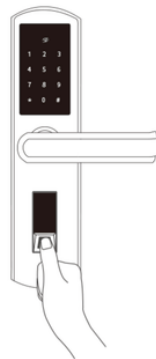
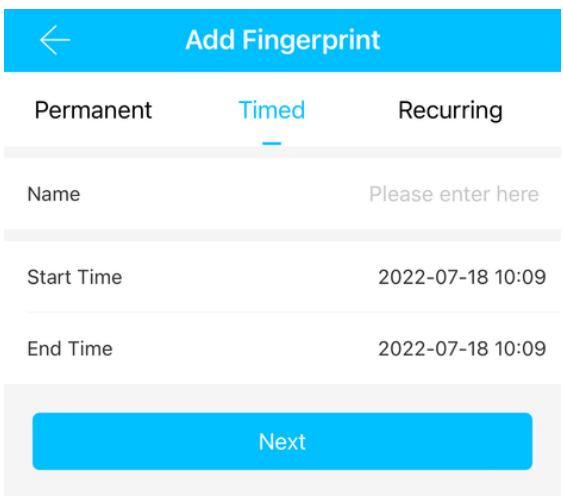
## These steps are similar for: Cards, Fingerprints & Wireless Remotes

1. Select the lock you wish to add users to.
2. Press "**Cards**", "**Fingerprints**", or "**Remote**", depending on what credential you wish to add.
3. Press the "**Add Fingerprint/IC Card/Remote**" button
4. Enter a name for the credential, & specify whether it is permanent or will only work for a limited time.
5. Follow the prompts to add the credential. The software will ask you to present the card to the lock, place your finger on the fingerprint reader or press a button on the remote.
6. Once this is complete, "**Operation Successful**" will show, & you will return to a screen showing the new credential

**Wireless Remotes are not compatible with all locks.**  
Settings → Firmware Update: Version 5.3.3.2 and above



You will be required to Place your Finger to the Sensor several times. Please follow the prompts...

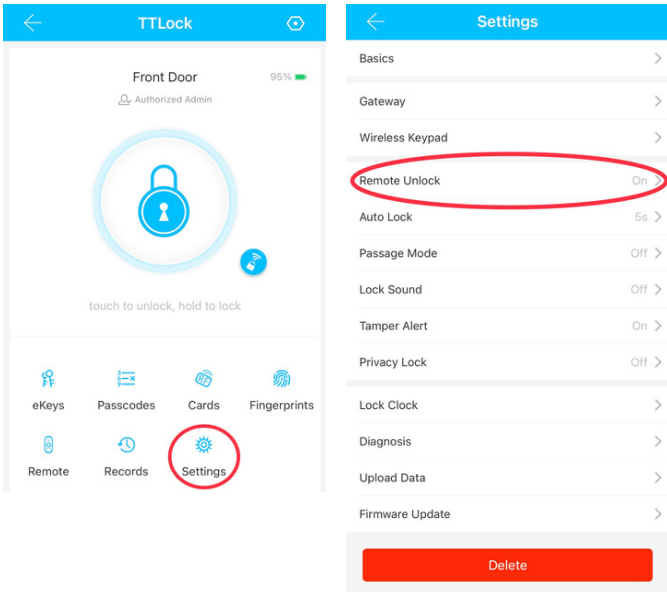




# Corporate

## Locksmiths & Electronic Security

### Enabling Remote Unlock



1. Open "TTLock"
2. Select the lock, then select "Settings"
3. Select the "Remote Unlock" setting
4. Press the button to turn **ON** "Remote Unlock"
5. Repeat this process for each lock that will connect to the gateway.



[secesafe.com/CLBTG2W](https://secesafe.com/CLBTG2W)

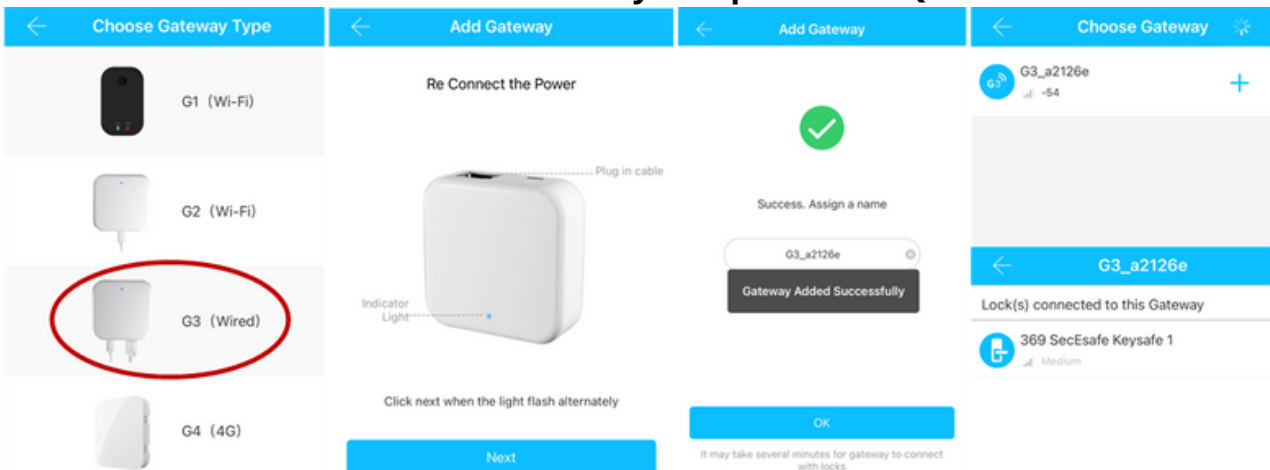


[secesafe.com/CLBTG3E](https://secesafe.com/CLBTG3E)

### Gateway Setup

1. Open "TTLock" and press the menu button. ("Hamburger"/3 horizontal lines) ☰
2. Select the "Gateway" option, then press the "+" icon.
3. Connect the G2/G3 Gateway to your network using 2.4GHz Wi-Fi or an Ethernet cable.
4. Press the "G2" or "G3" Gateway option, then power the gateway using the included USB-C cable. The light will start blinking Blue & Red.
5. Choose the Gateway from the list, name it & move to the next page.
6. The gateway will then search for nearby locks.
7. Afterwards, the connected locks will be shown as well as their signal strength.

**For more information on Gateway Setup scan the QR Codes above**



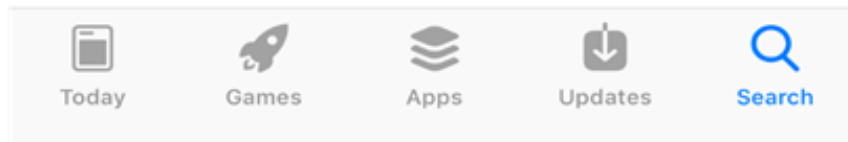
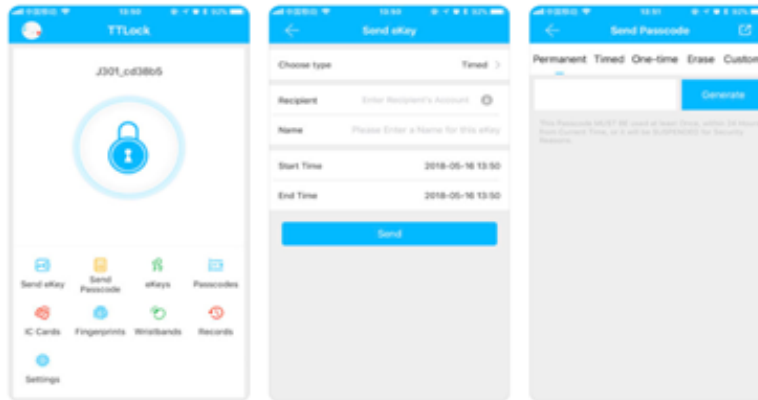
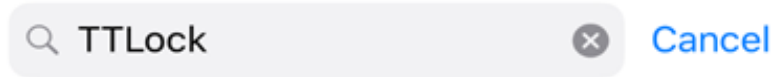


# Corporate

Locksmiths & Electronic Security

## Installing TTLock

Search for "TTLock" on the App Store



Android



Apple (iOS)



More Information



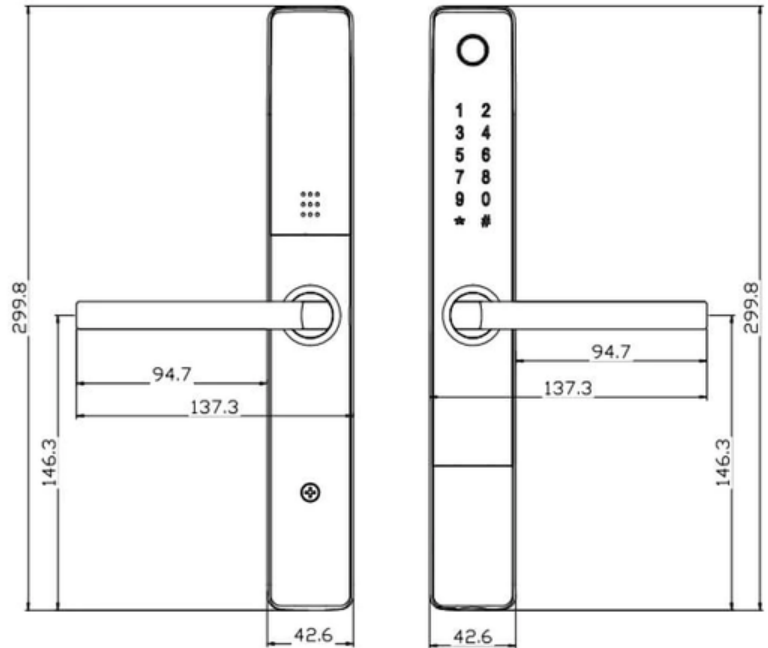
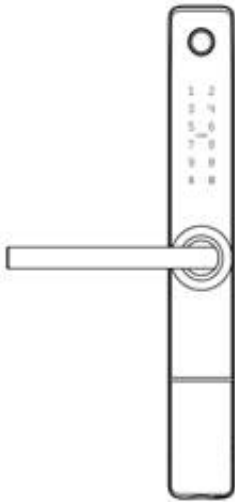


# DOOR PREPARATION

1. Check door thickness and Door Frame.

- Door frame  $\geq 110\text{mm}$
- Door thickness: 38-48mm

2. Check door open direction.



# PACKING LIST

Front Panel: x 1

Back Panel: x 1

Mortise: x 1

MiFare Card: x 1

Mechanical Key: x 1

U-Clip: x 1

User Manual: x 1

Strike & Strike Box: x 1

Screw Stubs 30mm: x 2

60mm Square Shaft: x 1

Screw Stubs 35mm: x 2

Sliding Screws 10mm: x 2

Mortise Screws: x 4

25mm Screw: x 1

30mm Screw: x 1

40mm Screw: x 1

50mm Screw: x 1

60mm Screw: x 1

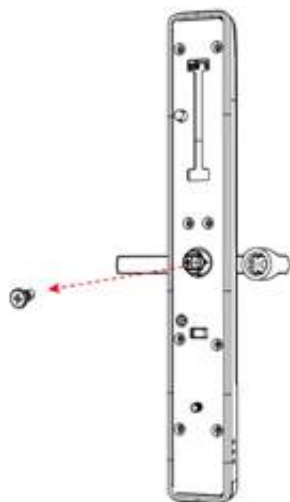
70mm Screw: x 1

80mm Square Shaft: x 1

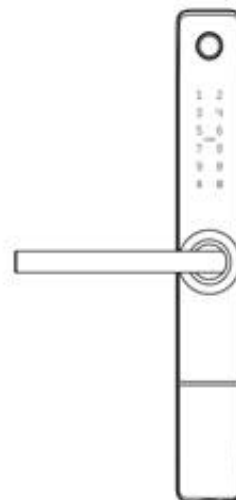
# CHANGING LOCK HANDING



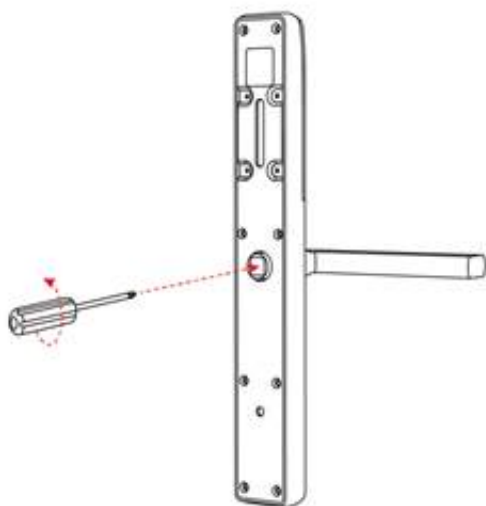
1. Turn the handle on the front panel loosen the screws on the handle counterclockwise



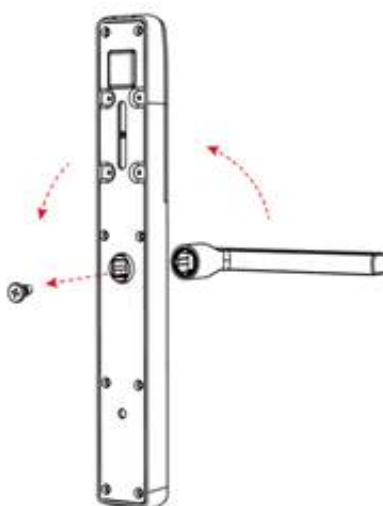
2. Remove the handle



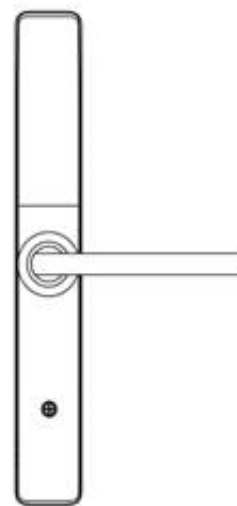
3. After adjusting the direction of the handle insert it into the handle seat and re-lock the screw of the handle to the complete the turning



1. Turn the handle on the front panel loosen the screws on the handle counterclockwise



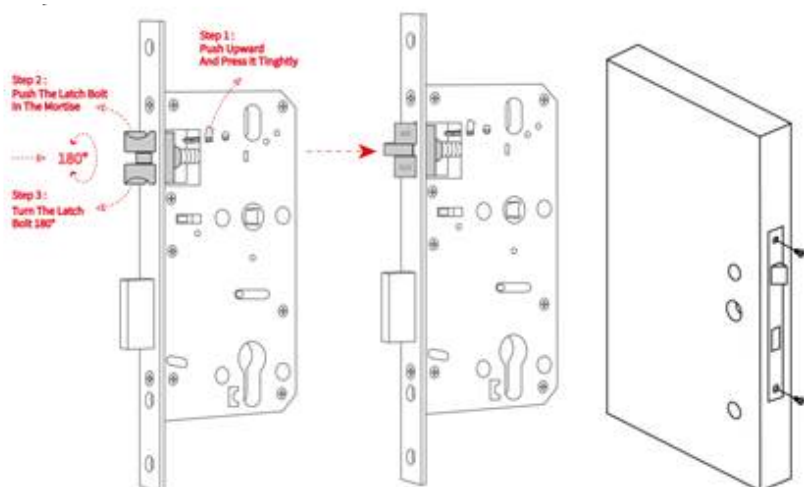
2. Remove the handle



3. After adjusting the direction of the handle insert it into the handle seat and re-lock the screw of the handle to the complete the turning

# INSTALLATION INSTRUCTIONS

## Step 1 - Install Mortise

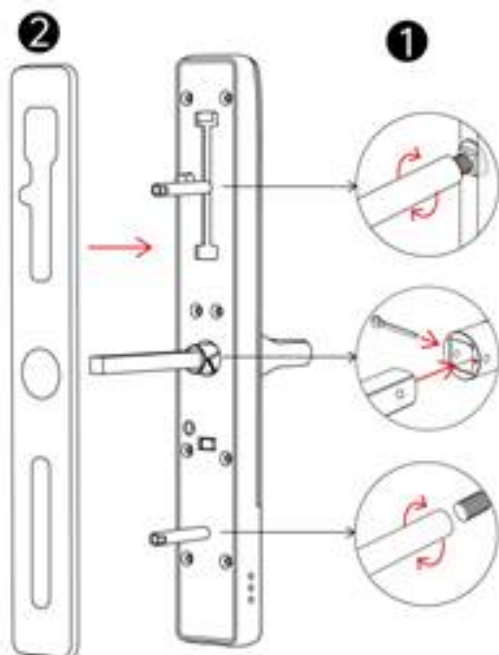


**According to the size indicated by the hole icon, open the corresponding hole position as needed, and install the lock body.**

**Adjust the direction of the bolt according to the necessary measurements.**

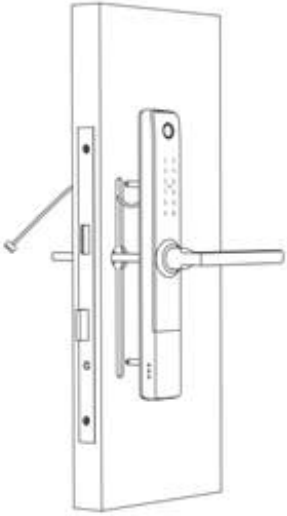
## Step 2 - Install Sliding Casing & Square Shaft

1. Choose a screw column suitable for the thickness of the door, install it on the front panel.
2. Install the waterproof piece onto the smart lock
3. Install the square shaft, put on the U-Clip. The arrow must point in the direction of the handle.



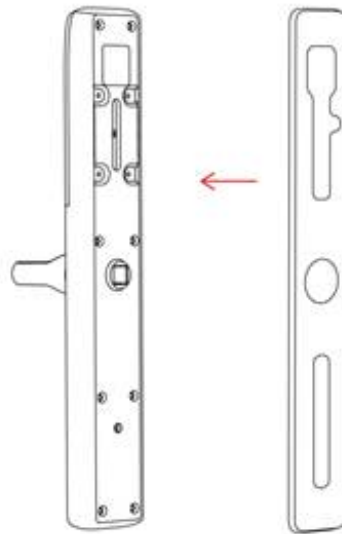
### Step 3 - Install Front Handle

1. Align the front of the panel of the installed accessories with the holes of the door and install onto the door.



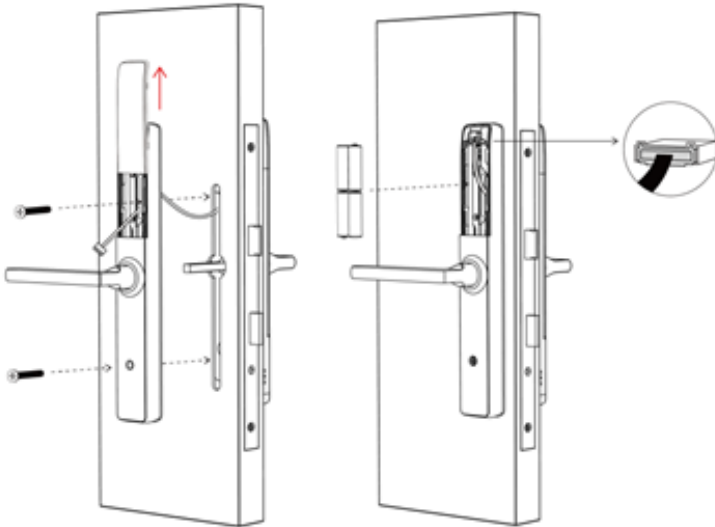
### Step 4 - Install Back Handle

1. Be sure to place rubber waterproof piece on before installing the back handle.



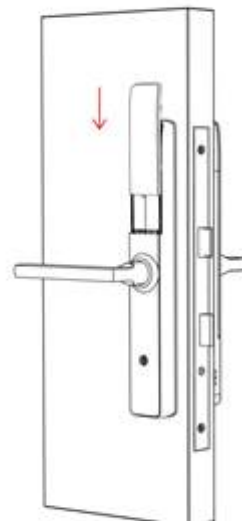
### Step 5 - Connect Cable & Smart Lock

1. Connect the power cable within the smart lock.
2. Fix the front and back panels with screws suitable to the thickness of the door.



### Step 6 - Install Batteries

1. Insert 4 x AA Batteries into battery compartment.
2. Place battery compartment cover on the smart lock to secure batteries.



# APP OPERATION GUIDE

## 1. APP Installation and Registration

- 1.1. Download the "TTLock" App from Google play store or Apple store.
- 2.2. Install and register an account with your phone number or email.

Note: The APP only supports Android 4.3 / IOS7.0 version and above. Once you pair a device with your phone/account, the device will not be able to link to other accounts, unless you remove the link from the App.

## 2. APP Connection

- 2.1. Turn on the Bluetooth on your phone.
- 2.2. Open the APP. Then click "Add Lock" and "Lock".
- 2.3. Touch the touch screen button of the smart lock to activate lock, the number keys indicator light will be bright and Click "Next" on the APP.
- 2.4. Find the smart lock name which starts with "xx\_xxx" and click "+".
- 2.5. Rename the name of smart lock and click "OK", then Click "Finish".

### Note:

- (1) If you do not see the + sign, it means that that device has already been paired with another phone / account and cannot be linked to your phone. You will need the previous owner to remove the device from the account or transfer control of the device to your account. Also, remember that your phone must be connected to the internet (3G / 4G / Wifi) when ADD / LINK a new device.
- (2) Remove a Bluetooth Admin: Press and hold the reset button on the back panel of the lock, the lock will indicate "Please input initialization passcode", then enter "000#" on the keypad, the lock will be indicate "deleting administrator successfully", which means the lock has been restored to factory defaults after initialization.

## 3. APP Operation Instruction

### 3.1. Send eKey

eKey is a function for you to authorize the Admin rights to other members, who has download the same APP in their own phones. All the people who holds can control the smart lock.


### 3.2. Generate Passcode

The passcode receiver can unlock the smart by entering the passcode manually. The passcode can be set as different type: Permanent / Timed / One-time(6 hours) / Erase (24 hours) / Customized / Recurring . All passcodes generated can be sent to those in need by mail and chatting tools.

- 3.3. eKeys: A file to manage the status and history of eKeys.
- 3.4. Passcodes: A file to manage the status and history of Passcodes.
- 3.5 IC Card: A file to manage the status and history of IC cards.
- 3.6 Fingerprints: A file to manage the status and history of Fingerprints.
- 3.7. Records: View locking and unlocking information to check when and who used it.
- 3.8. Authorized Admin: Authorize the admin to the users who can operate the lock as an Admin user.
- 3.9. Setting
  - 3.9.1. Basics: Display the Lock Number, MAC/ID, Battery level, Lock Name(you can manually change name of the door), Lock Group(the administrator can add multiple locks for grouping,which is suitable for rental housing. It is more convenient for group management of personnel), Admin Passcode(the default passcode is the unlock passcode of the administrator, which can be manually changed to a custom passcode).
  - 3.9.2. Auto Lock: Off-by-default. Open the App-click Setting, click Auto Lock-turn on and set time to 10S, 15S, 30S, 60S or Custom seconds you need, then click OK. When the setup is completed, it will be automatically locked after unlocking (for example, it will be automatically locked 10 seconds after unlocking if the time is set as 10 seconds).
  - 3.9.3. Lock Clock: Calibrate time of the lock.
  - 3.9.4. Diagnosis: Analyse the problem of the lock.
  - 3.9.5. Read Operation Records: This operation will read all records stored in the lock.
  - 3.9.6. Firmware Upgrade: to check whether there is any update version.
  - 3.9.7. Unlocking Notification: On-by-default. If this function is on, the administrator's phone will receive the unlocking information when someone who assigned with a key unlocks the door with the APP.
- 3.10. System Settings
  - 3.10.1. Sound: On-by-default, you can manually close it to turn off App system unlock operation sound.
  - 3.10.2. Touch to Unlock: Off-by-default, this function is invalid when the "ttlock" APP is turned off or running on the background of your phone. When the APP is open and connect within 10 meters from the lock, any family members can unlock the door by pressing any one touch screen button for at least 2 seconds. It is recommended to close the option if you do not need it.
  - 3.10.3. Lock Users: You can check your lock users here.
  - 3.10.4. Lock Group: the administrator can add multiple locks for grouping, which is suitable for rental housing. It is more convenient for achieving group management of personnel. It can be modified or deleted if not needed.
  - 3.10.5. Transfer locks: This function is used to transfer the administrator rights. Once transferred, you will not be the administrator again.
  - 3.10.6. Transfer gateway: This function is used to transfer the gateway. Once transferred, you will lose the right for managing the gateway.
  - 3.10.7. Languages: App system language setting.
  - 3.10.8. Screen Lock: After the function is turned on, you need to use your fingerprint or account password to open the the lock App. No need to verify again within 3 minutes.

# OPERATION INSTRUCTIONS FOR DIFFERENT FUNCTIONS

## 1. Unlock

- 1.1. Unlock with APP: Turn on the app and click the lock icon  in the interface to unlock it (The phone should be within 10 meters from the door lock).
- 1.2. Unlock with passcode: enter the numeric passcode and then press the # key to confirm the unlocking (The Admin Passcode can be set in the APP setting).
- 1.3. Unlock by touching the keypad: Open the APP, then turn on the “Touch to Unlock option” in the System Settings. Touch the keypad to unlock the door (The phone is required to be connected to WiFi or mobile data network and within 10 meters from the door lock).
- 1.4. Unlock by mechanical key: use a pointed object to open the circular keyhole which is under the touch screen button then insert the key to unlock it.
- 1.5. Unlock manually: manually twist the knob on the Back panel to unlock it.
- 1.6. Unlock with IC card: Swipe the valid mifare card to unlock it.
- 1.7. Unlock with Fingerprint: Press the valid fingerprint to unlock it.

## 2. Lock

- 2.1. Lock with APP: Turn on the App, press and hold the lock icon for 5 seconds to lock it. (The phone should be within 10 meters from the door lock).
- 2.2. Auto Lock: When you turn on the “Auto Lock” option in the APP and set the auto lock time, the lock will be locked automatically after you unlock the door.
- 2.3. Lock with the # key: press and hold the # key on the front panel keypad for 3 to 5 seconds to lock.
- 2.4. Lock by mechanical key: use a pointed object to open the circular keyhole which is under the touch screen button then insert the key to unlock it.
- 2.5. Lock manually: manually twist the knob on the Back panel to lock it.

## 3. Modify the Administrator's Unlocking Passcode

Open the APP - locate the lock you want to change admin passcode - click Setting - click Basic - click Admin Passcode - enter the new passcode with 4-9 numerical digits - click OK (The phone is required to be connected to WiFi or mobile data network and within 10 meters from the lock).

## 4. Remote Authorization of ekey

Turn on the APP - click Send eKey - select the ekey type as "Timed" or "Permanent" - Enter the APP account of the recipient-click Send button.  
(The phone is required to be connected to WiFi or mobile data network)

## 5. Freeze / Delete / Authorize / Name / Operate Already Sent ekeys by Administrator

Turn on the APP- click eKeys - click the ekey that has been sent - click Name / validity / delete the eKey info you need - clicking the menu on the upper right corner to conduct the freeze / authorization operation. (The phone is required to be connected to WiFi or mobile data network.)

## **6. Switch Administrator**

### **6.1. Delete the Administrator right**

Open the APP- locate the lock - click Setting - click Delete - enter your account password - click OK - Using a new phone to pair the lock again. A lock can only be paired with one administrator phone. Please stand within 10 meters away from the lock to open and connect the APP.

### **6.2. Switch through the Transfer locks function.**

Turn on the APP - click System Settings - click Transfer Locks - Select Locks - click Next - enter the recipient's APP account and the verification code - click Next - Finish (The phone is required to be connected to WiFi or mobile data network & within 10 meters from the lock ).

## **7. Remote Authorization of Passcode**

Turn on the APP - click Send passcode - select the type of the passcode (Permanent / Timed / One-time / Custom / Recurring) - click Generate. Then it will create a passcode. You can send the code to others by SMS, email and other chatting tools.(The phone is required to be connected to WiFi or mobile data network.)

## **8. Add or Clear IC card**

Select “ IC Cards” in the app, then select “ Add IC Card” from the menu on the right. There, enter a name to identify the card and select the type of access (temporary or permanent). When you press Ok, the lock will instruct you to bring the IC card closer to the lock to complete the process. Select “ Clear IC Cards”, all IC cards of this lock will be deleted.

## **9. Delete Already Sent Passcode by Administrator**

Turn on the APP - click Passcodes - select the passcode that has been sent - delete the passcode (The phone is required to be connected to WiFi or mobile data network and within 10 meters from the lock).

## **10. Add or Clear Fingerprint**

Select “ Fingerprints” in the app, then select “ Add Fingerprint” from the menu on the right. There, enter a name to identify the fingerprint and select the type of access (temporary or permanent). When you press Next, the lock will instruct you to place your Finger to the Sensor several times. Select “ Clear Fingerprints”, all Fingerprints for this Lock will be deleted.

## **11. System Reset**

Press and hold the reset button on the back panel of the lock, the lock will indicate “Please input initialization passcode”, then enter “000#” on the keypad, the lock will be indicate “deleting administrator successfully”, which means the lock has been restored to factory defaults.



## **Q: How can I reset my ttlock app account if I forgot my password?**

- A:** 1. Open the ttlock lock App, click Forgot password, enter the email address you registered for your ttlock account.  
2. Enter a new password, check Get code. You should receive verification code in the email, Enter the verification code to reset your password. Use the new password to sign in the account.

## **Q: Can I still use the smart lock when my phone is lost or turn off?**

- A:** 1. Yes. You can still use the traditional physical key or password to lock / unlock the door.  
2. Use a new phone to download the App, Sign in your App account with the email or phone number and password. Enter the verification code, then you can use the new phone to unlock the door. Don' t forget to reset the door after you unlock it.

## **Q: The door won' t lock automatically when I close it.**

- A:** 1. Check if Auto Lock is set. If not, press and hold the # key on the panel keypad for 3 to 5 seconds to lock the door.  
2. If the door doesn' t lock automatically when Auto Lock is set, then the lock has been installed incorrectly.  
3. The Auto Lock function is not activated when the batteries are completely discharged. Check if the batteries are discharged.

## **Q: Lock configuration failed.**

- A:** 1. Remove the mechanical key from the cylinder.  
2. Check that the door was closed properly or if lock operation was interfered.

## **Q: The App is disconnected from the door unit and / or I can't find my lock on the App.**

- A:** 1. Close the App, turn off your phone's Bluetooth. Then turn Bluetooth back on, and open the App.  
2. Refresh the App.  
3. The lock can only be connected to one user's App. It's possible that another user's phone App is already connected to the lock. If don't know which user is connected to it, you have to reset the lock.

**Q: The smart lock has started beeping whenever I lock or unlock the door.**

**A:** This is an indication your battery is low; it's time to change the batteries.

**Q: I'm unable to open the door from a distance of 10 meters / yards**

**A:** 1. The app works via a Bluetooth connection, which can be impacted by the environment.  
2. For both security and functionality reasons, try moving as close as possible to the lock."  
3. The battery is low, use the emergency power supply for the door.

## IMPORTANT INFORMATION

1. Read all instructions in their entirety.
2. Familiarize yourself with all warning and caution statements.
3. Remind all family members of safety precautions.
4. Always have access to your lock's standard key.
5. If using the Lock with the # key or Auto-Lock features, make sure to have your smartphone, passcode or standard key with you to prevent locking yourself out.
6. Replace low batteries immediately. Preventing Inadvertent Unlocking of Your Door.

### WARNING

Failure to follow these safeguards could result in your lock opening inadvertently.

1. Avoid keeping and storing phones and fobs unnecessarily close to the lock when inside the home.
2. Restrict access to your lock's back panel and routinely check your settings to ensure they have not been altered without your knowledge.
3. Protect the password to your ttlock app and your account.
4. When sending an eKey, always double-check that you are sending it to the correct recipient.
5. Protect and restrict access to your smartphone so that your app settings cannot be altered without your knowledge.
7. When sending eKeys, be aware of the difference between an Admin user and other users in the system. The Admin user can send, disable and delete eKeys.
8. If your smart phone is lost or stolen, reset your lock. Resetting your smart lock system will restore your lock to factory settings and delete all smart phones and fobs.